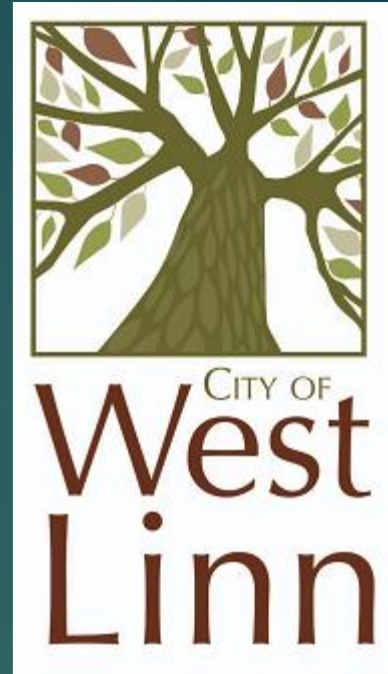
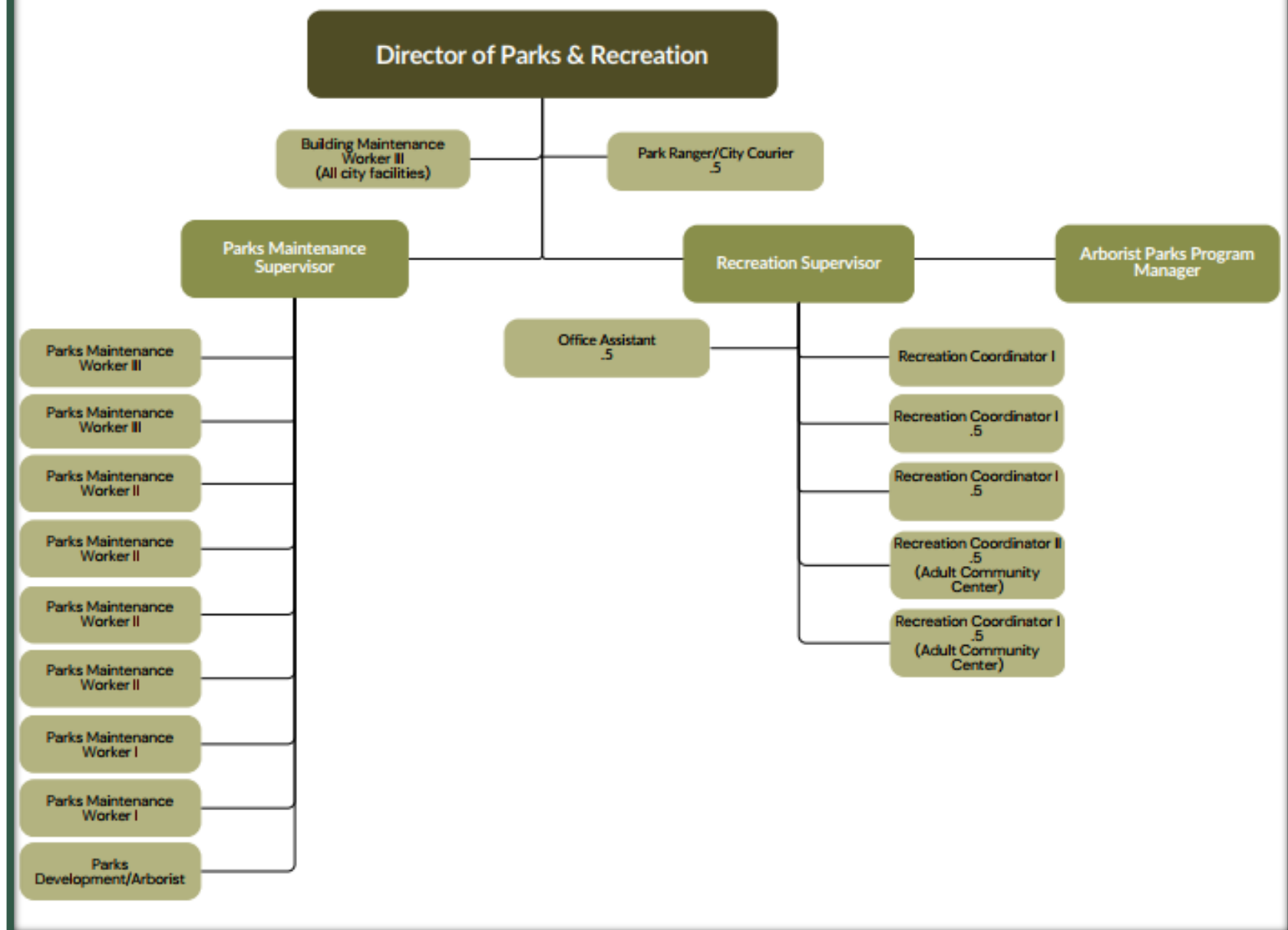
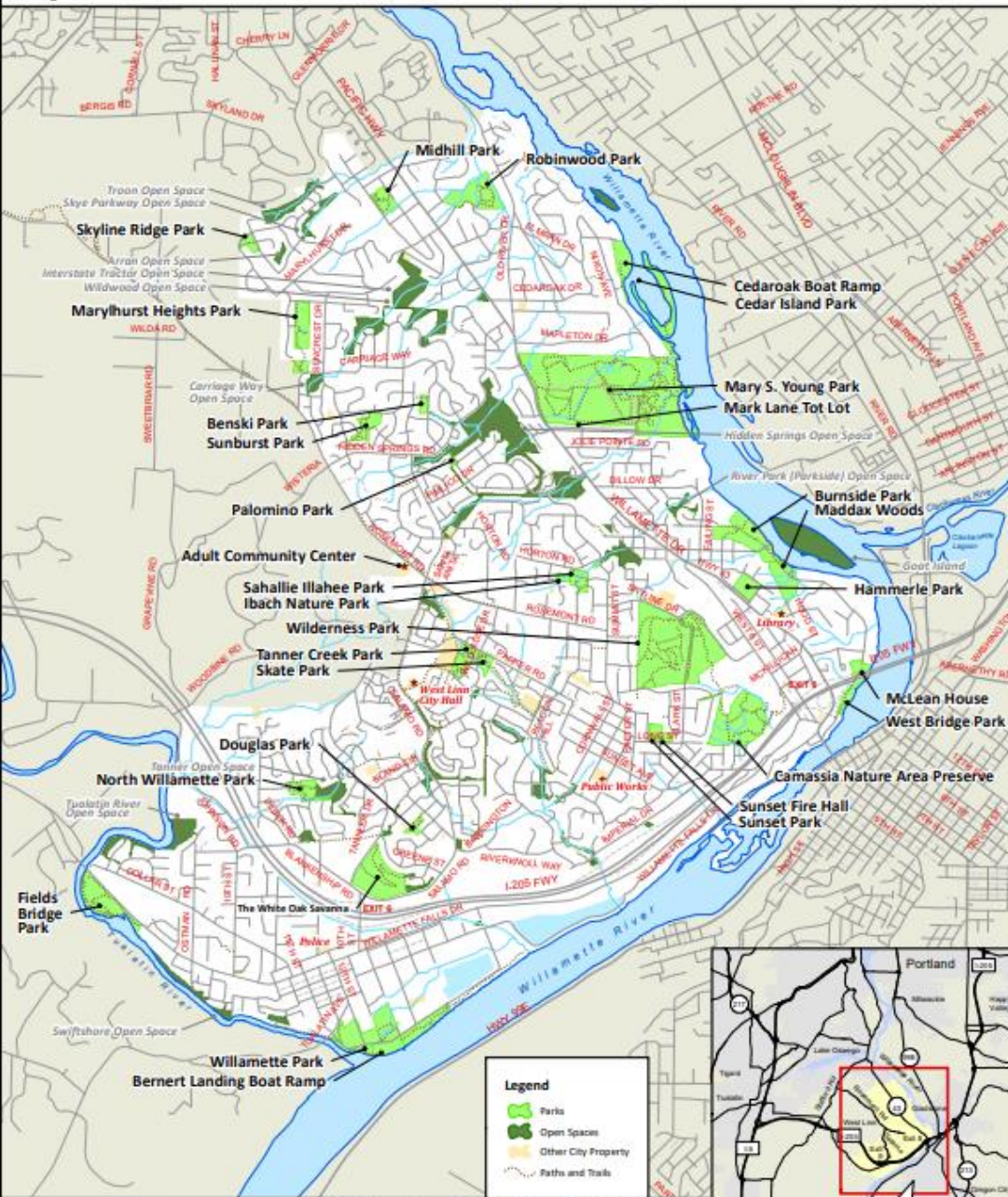


# West Linn Parks and Recreation





# West Linn Parks & Open Spaces



Classification	Size Range (in acres)	# of Existing Sites	Total Park Acreage	Examples
<b>Active-Oriented Parks</b>	0.1 - 9.1	12	45.1	Benski, Marylhurst Heights, Sunset, Tanner Creek
<b>Special Use Parks</b>	0.6 - 19.7	7	38.7	Adult Community Center, Bernert Landing Boat Ramp
<b>Multi-Use Parks</b>	5.2 - 136.0	6	207.5	Mary S. Young, Fields Bridge, Willamette
<b>Passive-Oriented Parks</b>	0.1 - 64.4	41	213.9	Maddox Woods, Swiftshore Park, Ibach Nature Park
<b>Natural Resource Areas</b>	0.2 - 13.1	25	43.1	Arran Open Space, Troon Open Space, many unnamed sites
<b>Totals</b>		<b>91</b>	<b>548.30</b>	

## Park Distribution

The City of West Linn has parks and open space distributed across the City (Map 1). These sites are supplemented by school facilities and other recreation and open space resources, such as sites provided by the Nature Conservancy, State of Oregon, Oregon Department of Transportation, and others. (See Appendix A.)

## Recreation Facilities

West Linn's parks emphasize trails at 52 sites, along with facilities that provide access to natural areas. Many parks also support play, with open lawn areas, play features, picnic areas, and sports/recreation features, which makes some parks feel full of activities (Map 2).

Table 2: City Recreation Facilities

Facility Type	# of Existing Facilities
<b>Outdoor Recreation</b>	
Play Features	16
Flexible Use Lawn	22
Covered Picnic Shelter	6
Skate Park / Spots	2
Spray Parks / Water features	5
<b>Athletic Facilities</b>	
Rectangular Fields	8
Ball Fields	7
Basketball Courts (Outdoor)	12
Tennis Courts	5
Volleyball Court	2

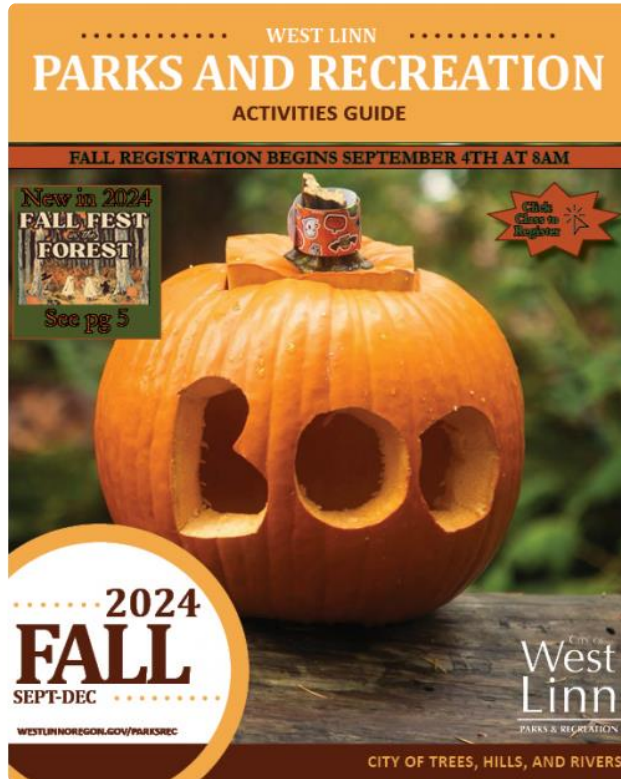
Facility Type	# of Existing Facilities
<b>Trails/Natural Features</b>	
Natural Areas & Wildlife Viewing	25
Trails	52
River Access	14
Interpretive Features	3
<b>Specialized</b>	
Community Gardens	1
Boat Ramps	2
Special Use Buildings	3

Note: See Appendix A for detail

Volunteers helping to enhance and protect our natural areas:

- ▶ Mary S Young
- ▶ Maddax Woods
- ▶ McLean Park
- ▶ Fields Bridge
- ▶ Palomino Loop Trail
- ▶ Wilderness Park
- ▶ Burnside Park
- ▶ Carriage Way
- ▶ Willamette Park
- ▶ Swiftshore Park





New in 2024!

# FALL FEST *in the* FOREST

We are so excited to introduce our brand new Autumn event: Fall Fest in the Forest. Fall Fest at the Forest celebrates the changing seasons with a range of family-friendly activities, entertainment, and delicious food.

Join us on October 12th from 11am-2pm for a day of harvest fun!

- Free Pumpkins to decorate or take home & carve!
- Live music: Big Plans
- Trick or Treat throughout the forest!
- Dress up in your Halloween costume!
- Harvest crafts
- Enjoy sweet treats, cider, and cocoa
- Dog costume contest!
- Scavenger Hunt

Come join us  
Saturday from  
10-2 at  
Mary S Young

# 2023 P & R Fun Facts

- ▶ Total pounds of trash/dog waste per week: 800 pounds
- ▶ Total run time hours for 5 spray pads (3 months): 980 hours
- ▶ Total benches in parks: 113
- ▶ Free Street Trees provided: 306
- ▶ Total activity registrations: 4524
- ▶ Total picnic reservations: 550
- ▶ Total new member profiles created: 2856
- ▶ Total number of events: 23
- ▶ Total number of event attendees: 30,500 estimated



## Megan and Mike's Garden





